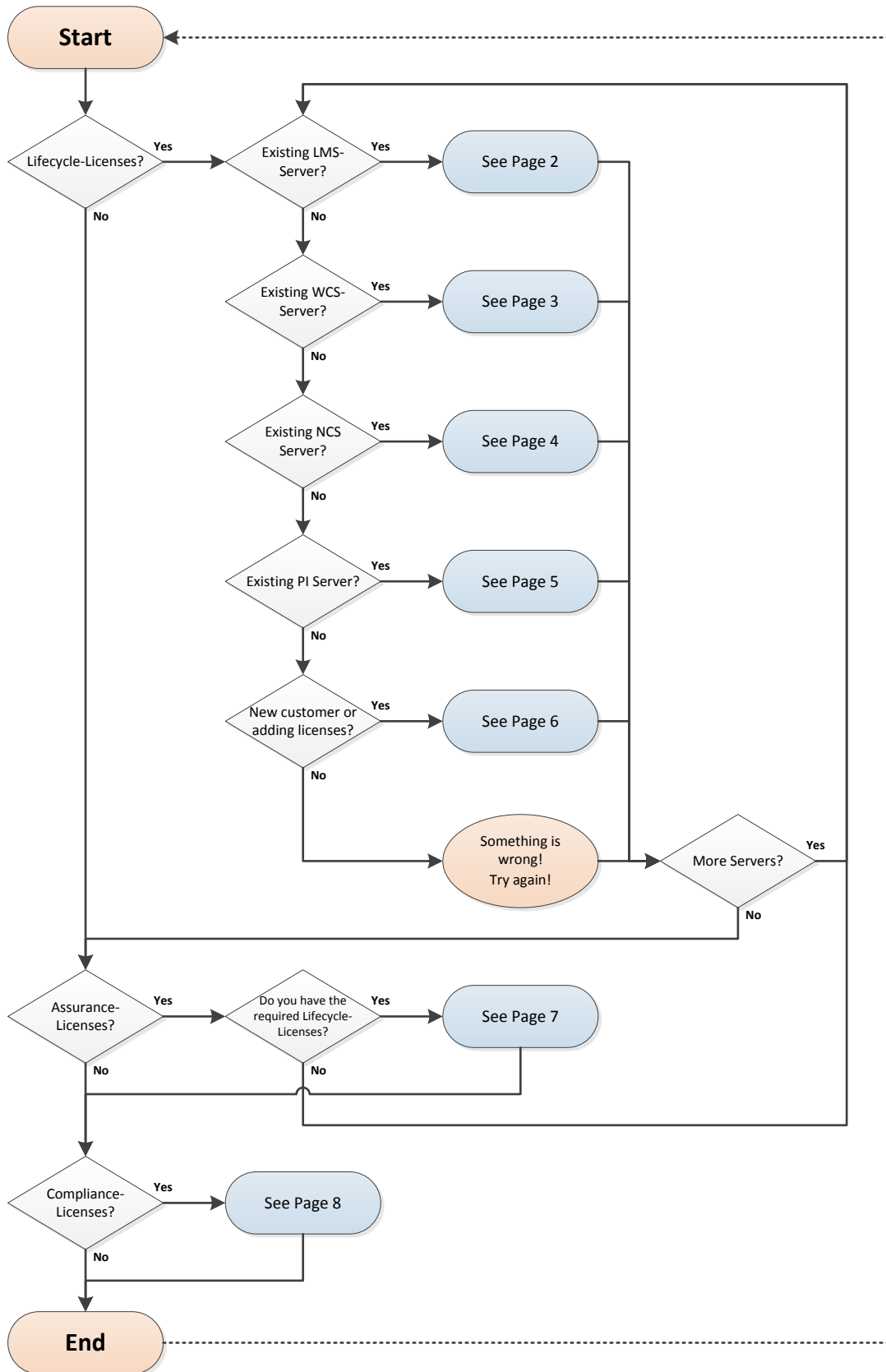


License-Migration to Prime Infrastructure 2.1

Version 1.0 - Overview

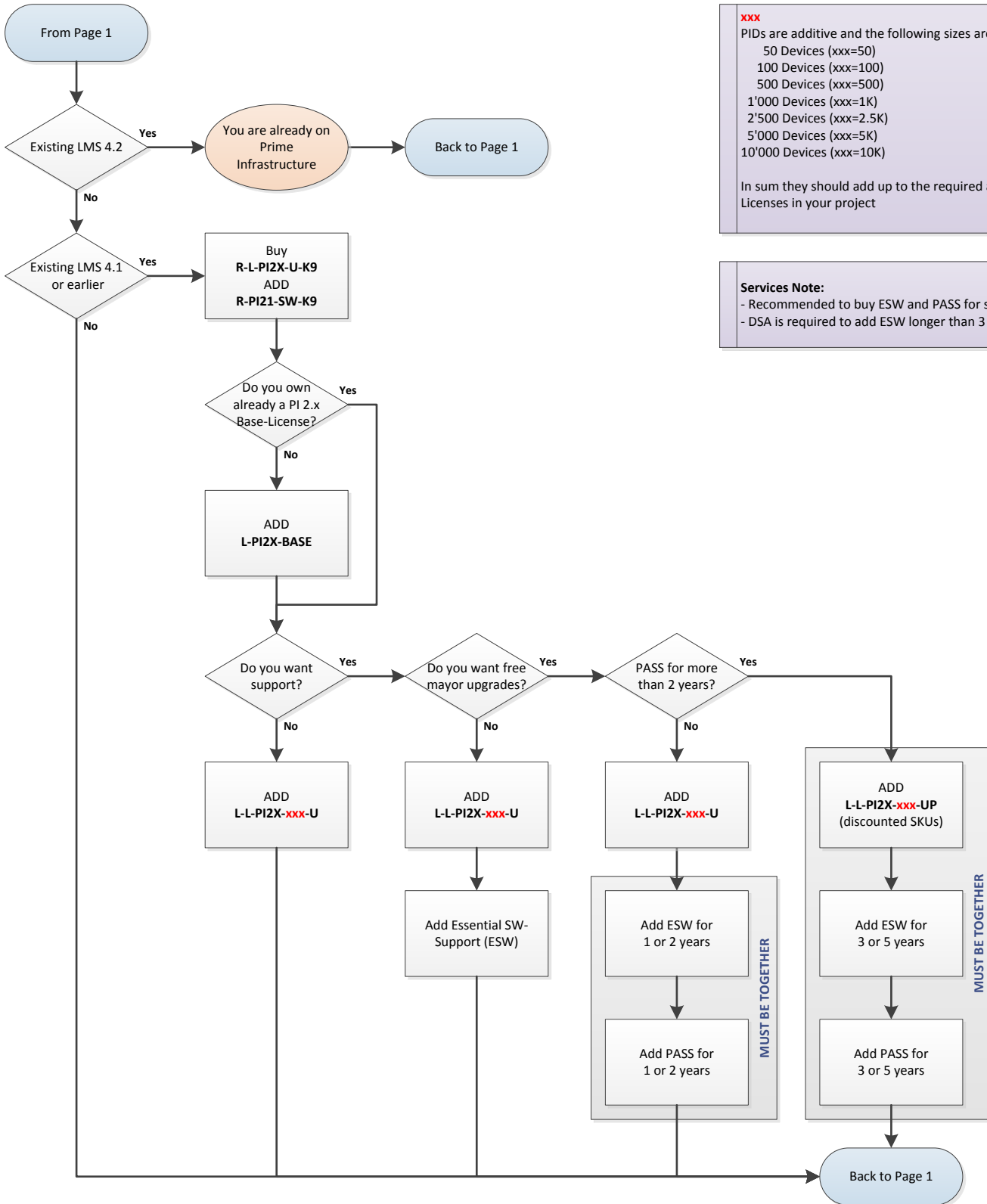


For technical migration-path, please see separate document

This informal document has been created based on the PI 2.1 Licensing- and Ordering-Guide. Please doublecheck there for changes

License-Migration to Prime Infrastructure 2.1

Version 1.0 - LMS



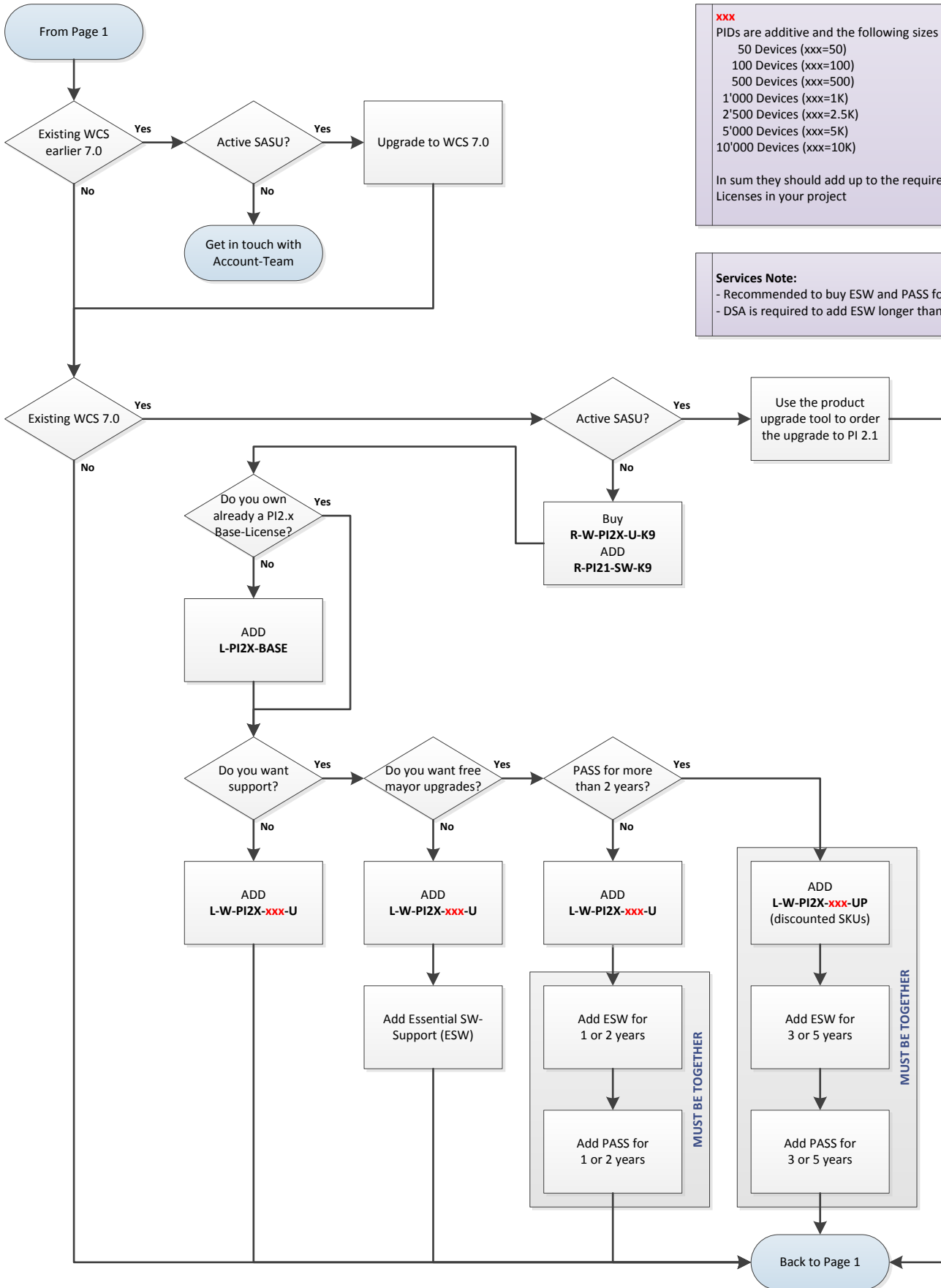
xxx
 PIDs are additive and the following sizes are available:
 50 Devices (xxx=50)
 100 Devices (xxx=100)
 500 Devices (xxx=500)
 1'000 Devices (xxx=1K)
 2'500 Devices (xxx=2.5K)
 5'000 Devices (xxx=5K)
 10'000 Devices (xxx=10K)

In sum they should add up to the required amount of Licenses in your project

Services Note:
 - Recommended to buy ESW and PASS for same duration
 - DSA is required to add ESW longer than 3 years!

License-Migration to Prime Infrastructure 2.1

Version 1.0 - WCS



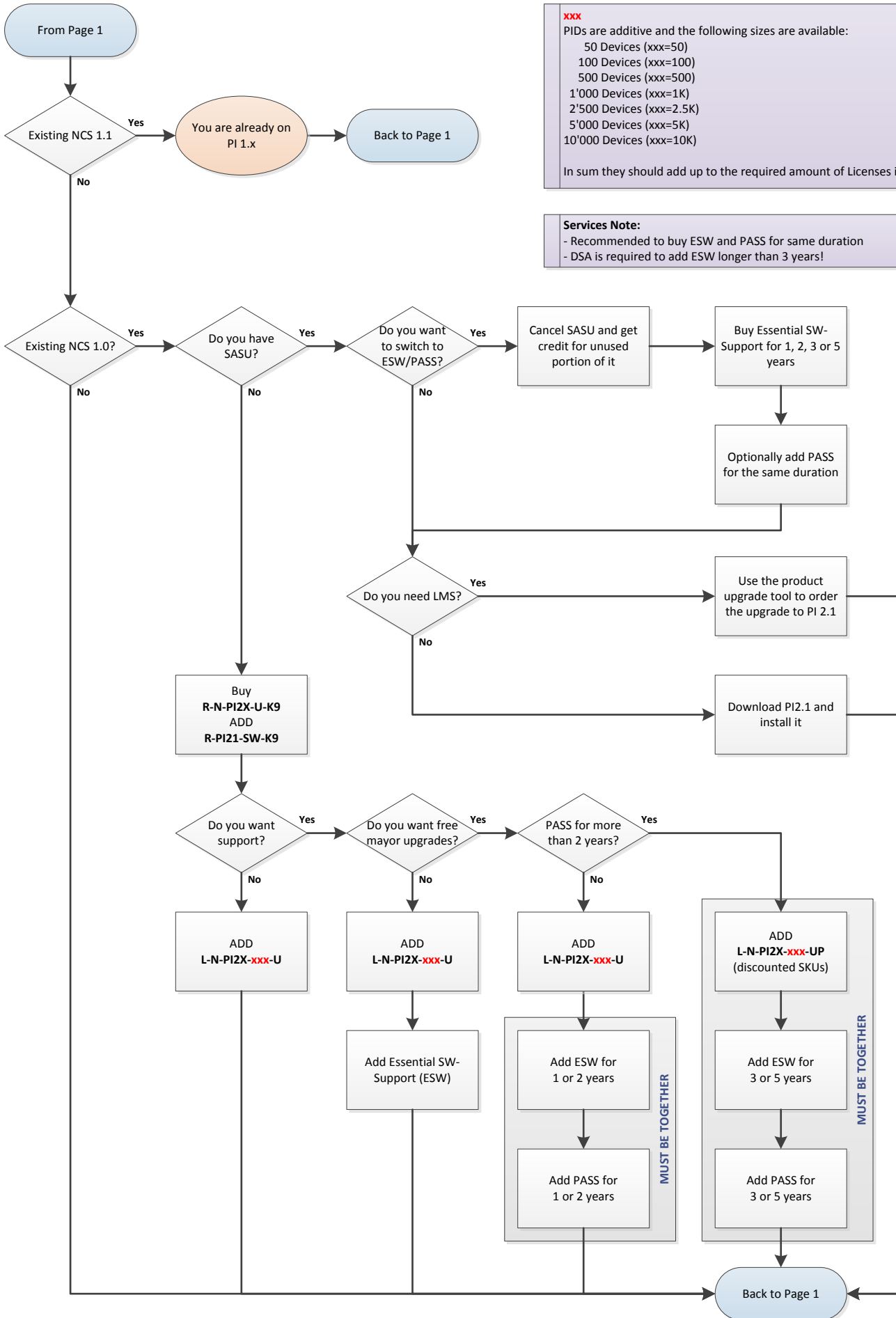
xxx
 PIDs are additive and the following sizes are available:
 50 Devices (xxx=50)
 100 Devices (xxx=100)
 500 Devices (xxx=500)
 1'000 Devices (xxx=1K)
 2'500 Devices (xxx=2.5K)
 5'000 Devices (xxx=5K)
 10'000 Devices (xxx=10K)

In sum they should add up to the required amount of Licenses in your project

Services Note:
 - Recommended to buy ESW and PASS for same duration
 - DSA is required to add ESW longer than 3 years!

License-Migration to Prime Infrastructure 2.1

Version 1.0 - NCS

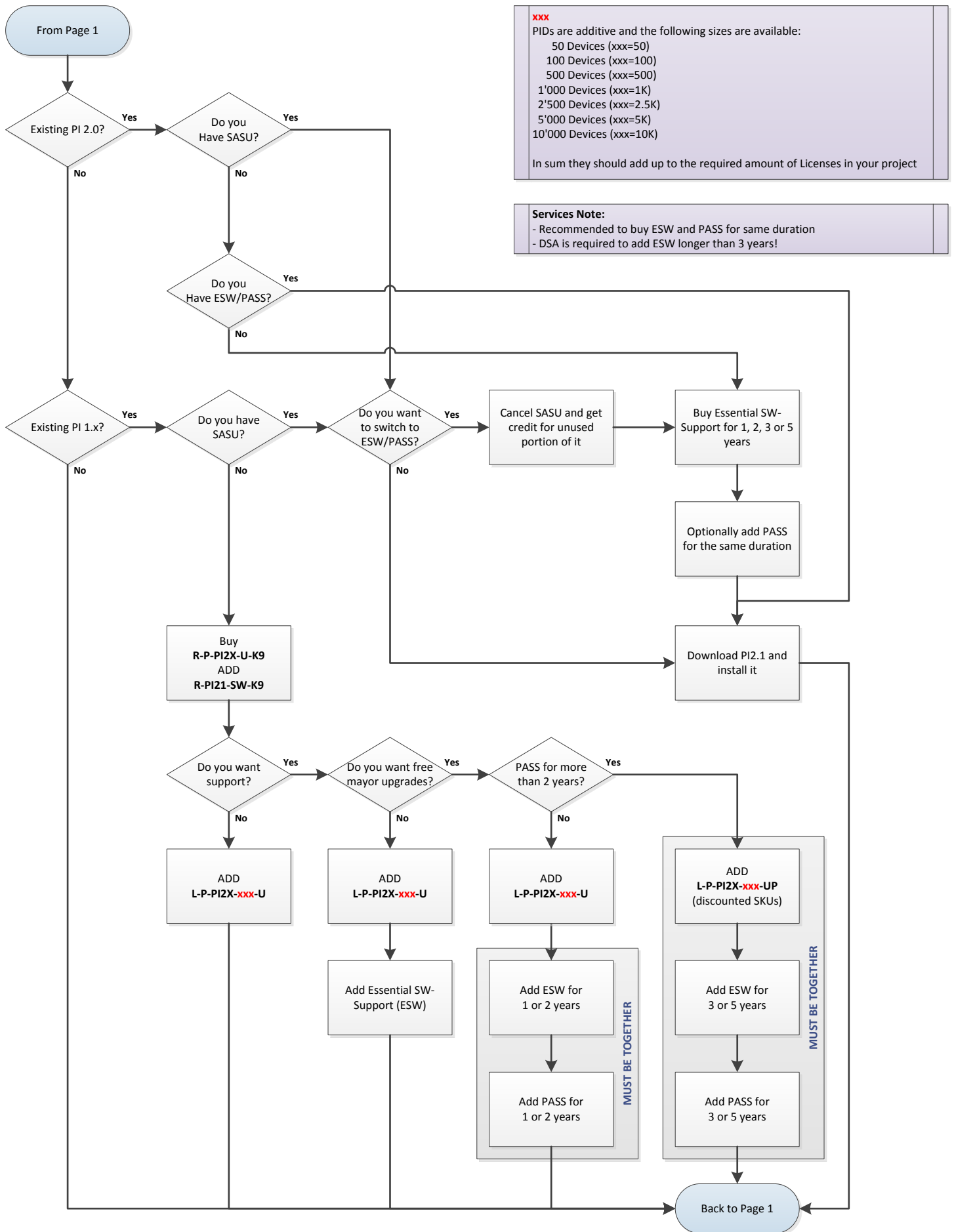


xxx
 PIDs are additive and the following sizes are available:
 50 Devices (xxx=50)
 100 Devices (xxx=100)
 500 Devices (xxx=500)
 1'000 Devices (xxx=1K)
 2'500 Devices (xxx=2.5K)
 5'000 Devices (xxx=5K)
 10'000 Devices (xxx=10K)
 In sum they should add up to the required amount of Licenses in your project

Services Note:
 - Recommended to buy ESW and PASS for same duration
 - DSA is required to add ESW longer than 3 years!

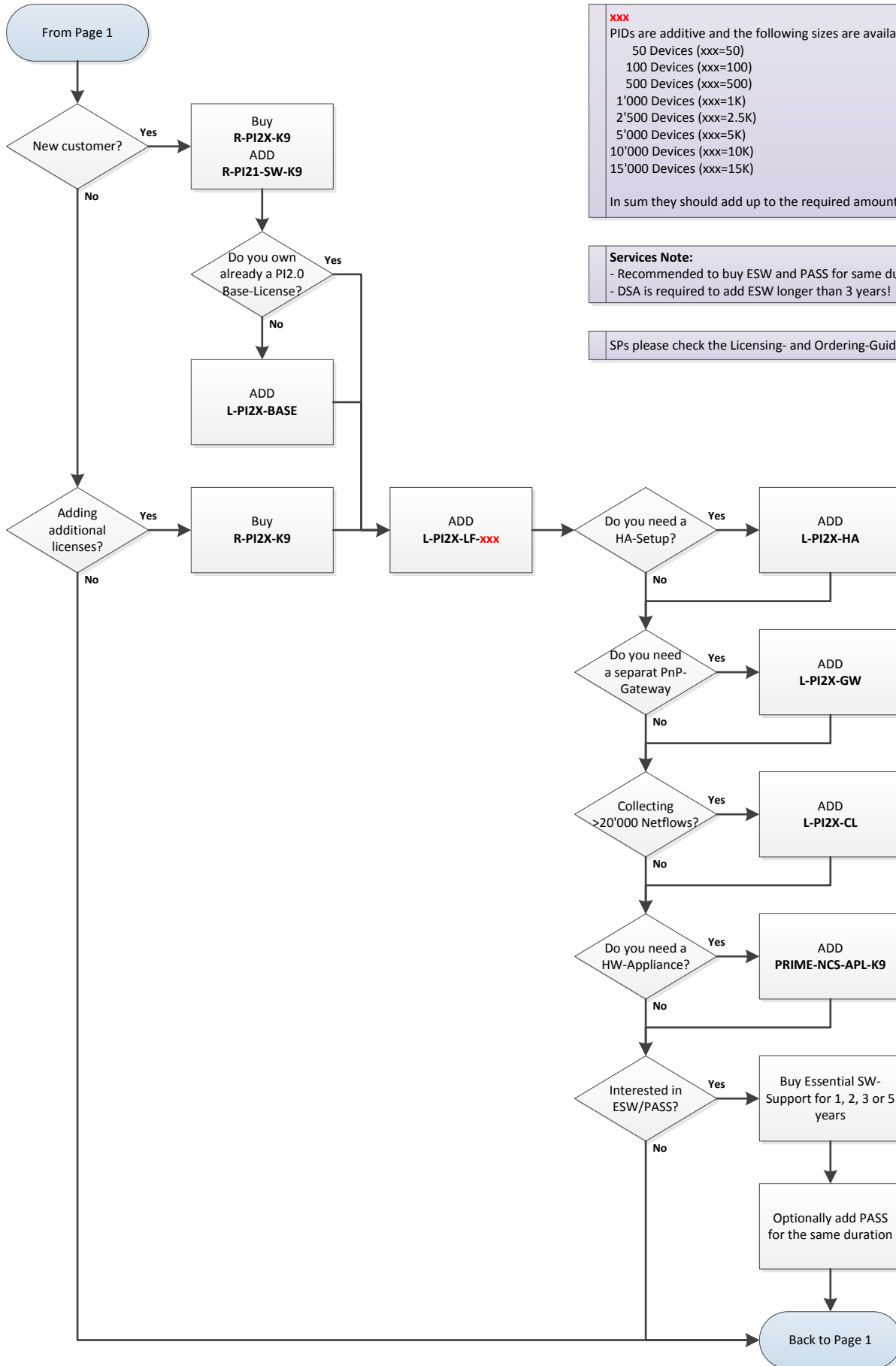
License-Migration to Prime Infrastructure 2.1

Version 1.0 – PI 1.x/PI2.x



License-Migration to Prime Infrastructure 2.1

Version 1.0 – New Customer/Adding licenses



xxx

PIDs are additive and the following sizes are available:

- 50 Devices (xxx=50)
- 100 Devices (xxx=100)
- 500 Devices (xxx=500)
- 1'000 Devices (xxx=1K)
- 2'500 Devices (xxx=2.5K)
- 5'000 Devices (xxx=5K)
- 10'000 Devices (xxx=10K)
- 15'000 Devices (xxx=15K)

In sum they should add up to the required amount of Licenses in your project

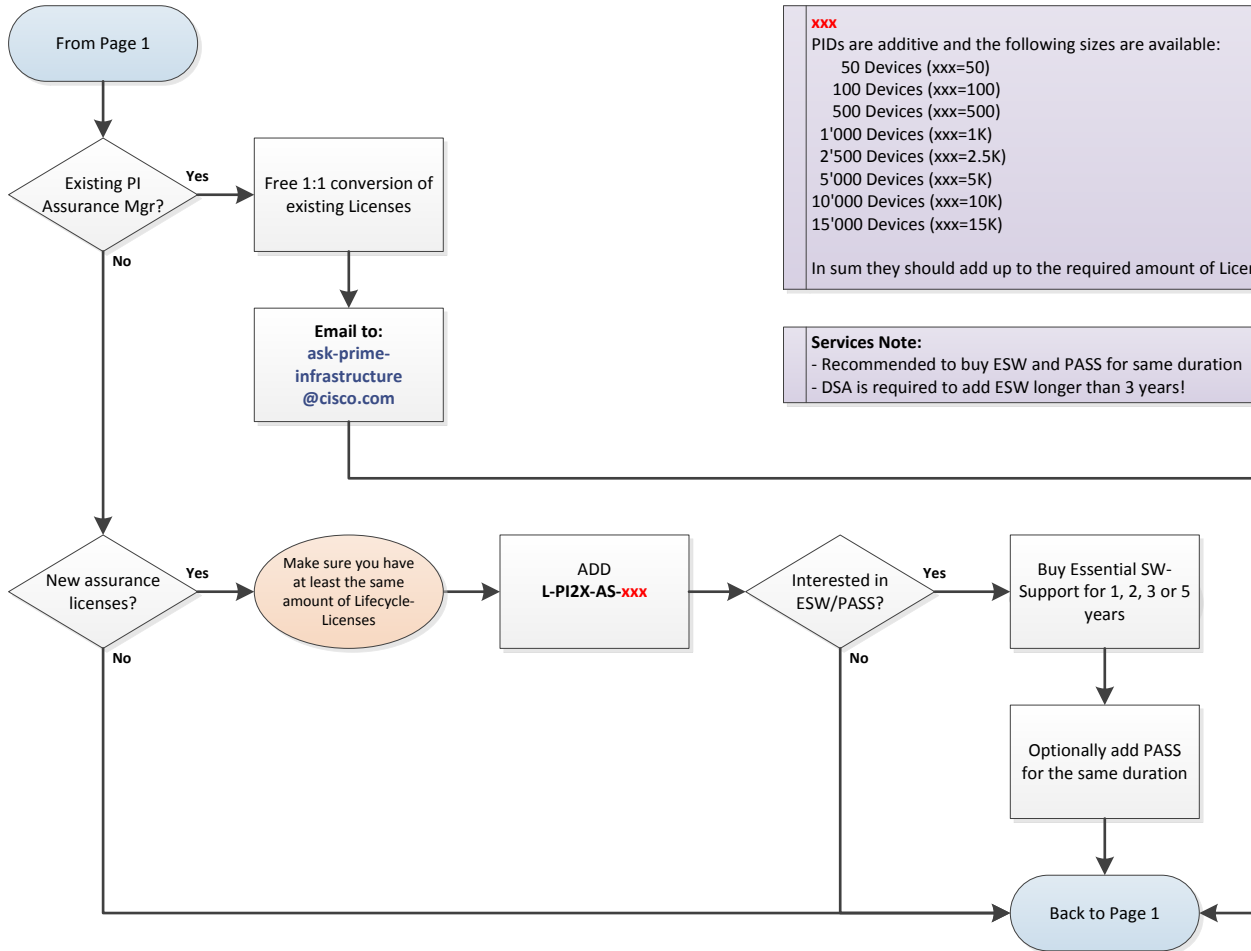
Services Note:

- Recommended to buy ESW and PASS for same duration
- DSA is required to add ESW longer than 3 years!

SPs please check the Licensing- and Ordering-Guide!

License-Migration to Prime Infrastructure 2.0

Version 1.0 - Assurance



xxx

PIDs are additive and the following sizes are available:

- 50 Devices (xxx=50)
- 100 Devices (xxx=100)
- 500 Devices (xxx=500)
- 1'000 Devices (xxx=1K)
- 2'500 Devices (xxx=2.5K)
- 5'000 Devices (xxx=5K)
- 10'000 Devices (xxx=10K)
- 15'000 Devices (xxx=15K)

In sum they should add up to the required amount of Licenses in your project

Services Note:

- Recommended to buy ESW and PASS for same duration
- DSA is required to add ESW longer than 3 years!

License-Migration to Prime Infrastructure 2.1

Version 1.0 - Compliance

